

**GENERAL DESCRIPTION**

Standardized automatic fire fighting pump sets of top quality, for guaranteed performance, manufactured in accordance to local legislation. Suitable to be installed in fire fighting pumping stations in : buildings, industrial plants, shopping centers, super markets, car parks, hospitals, schools etc

**RFFD, 1 diesel pump - 1 electric pump - 1 jockey**

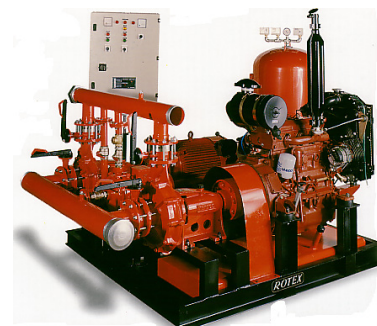
Type	Installed Power HP			Capacity m <sup>3</sup> /h									
				6	8,4	10,8	15	18	21	24	27		
	Electric pump	Diesel pump	Jockey pump	Head m									
RFFD 5.5/10/2; 180C-40/B	5,5	10	2	62	59	56	49	43	35				
RFFD 7.5/10/2; 180B-40/B	7,5	10	2	73	71	69	64	59	54	46			
RFFD 10/10/3; 180A-40/B	10	10	3	85	83	81	76	72	67	60			
RFFD 10/12.5/3; 180A-40/B	10	12,5	3	85	83	81	76	72	67	60			
RFFD 12.5/12.5/3; 200B-40/B1	12,5	12,5	3	94	92	90	85	80	74	68	61		
RFFD 12/21/3; 200B-40/B1	12,5	21	3	94	92	90	85	80	74	68	61		
RFFD 15/21/3; 200A-40/B	15	21	3	102	101	98	93	88	83	76	69		

Type	Installed Power HP			Capacity m <sup>3</sup> /h										
				21	24	27	30	34	38	42	46	50	55	60
	Electric pump	Diesel pump	Jockey pump	Head m										
RFFD 15/21/3;40/B1-E	15	21	3	53,5	53	53	52,5	51,5	50	48,5	47,5	45,5	43	38
RFFD 20/21/3;40/B1-Δ	20	21	3	58	58	58	57,5	57	56,5	55	53,5	51,5	48	45
RFFD 20/27/3;40/B1-Δ	20	27	3	58	58	58	57,5	57	56,5	55	53,5	51,5	48	45
RFFD 15/21/3;40/B1-Γ	20	21	3	64	64	64	63,5	63	62	60	58	56,5	53	48
RFFD 20/27/3;40/B1-Γ	20	27	3	64	64	64	63,5	63	62	60	58	56,5	53	48
RFFD 20/27/3;40/B1-B	20	27	3	69	69	69	68,5	68	67,5	66	65	63	59	
RFFD 25/27/3;40/B1-A	25	27	3	76	76	76	75,5	74,5	73,5	73	72	70	67	64

Type	Installed Power HP			Capacity m <sup>3</sup> /h											
				30	34	38	42	46	50	55	60	65	75	80	85
	Electric pump	Diesel pump	Jockey pump	Head m											
RFFD 10/10/3;50/A1-E	10	10	3	32	31,5	31	30	28,5	27,6	26,5	25,5	23,5	18,5	15,5	
RFFD 10/12.5/3;50/A1-Δ	10	12,5	3	36	35,5	35	34	33,5	33	32	30,5	28			
RFFD 15/21/3;50/A1-Δ	15	21	3	36	35,5	35	34	33,5	33	32	30,5	28	23,5	20,5	
RFFD 15/21/3;50/A1-Γ	15	21	3	41	40,5	40,1	39,8	39	38,5	37,5	36	34	29	26,5	
RFFD 20/21/3;50/A1-B	20	21	3	46,6	46,2	45,8	45,5	45	44	43	41,5	40,5	36	33,5	
RFFD 20/27/3;50/A1-B	20	27	3	46,6	46,2	45,8	45,5	45	44	43	41,5	40,5	36	33,5	
RFFD 15/21/3;50/A1-A	15	21	3	52,3	52	51,7	51,3	51	50,5	49,5	48,5	47			
RFFD 20/21/3;50/A1-A	20	21	3	52,3	52	51,7	51,3	51	50,5	49,5	48,5	47	43,5	41	
RFFD 20/27/3;50/A1-A	20	27	3	52,3	52	51,7	51,3	51	50,5	49,5	48,5	47	43,5	41	

**TECHNICAL DATA**

- Electric single / multi stage pump, electric motor 2p air cooled, coupling through flexible joint or monoblock
- Diesel single / multi stage pump, diesel engine air/water cooled, coupling through flexible joint
- Jockey pump of horizontal or vertical design
- Expansion tank, with automation devices
- Common suction manifold with valves for each pump
- Common discharge manifold with valve and non return valves for each pump
- Support frame, battery
- Control panel with electronic board for the diesel engine and charging device for battery
- Sets are delivered fully assembled, hydraulically tested, ready to be installed
- Certifications ISO 9001, declaration of conformity CE



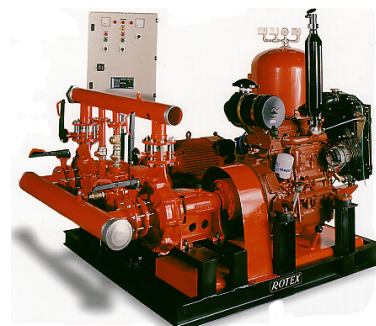
Type	Installed Power HP			Capacity m <sup>3</sup> /h													
				Head m													
				30	34	38	42	46	50	55	60	65	70	75	80	90	
RFFD 25/27/3; 50/B1-B	25	27	3	73,5	73	72,5	72	71,5	71	70,5	70						
RFFD 30/37/3; 50/B1-B	30	37	3	73,5	73	72,5	72	71,5	71	70,5	70	68	66	63,5	61,5	54	
RFFD 25/27/3; 50/B1-A	25	27	3	84	83,5	82,5	82	81,5	81								
RFFD 40/37/3; 50/B1-A	40	37	3	84	83,5	82,5	82	81,5	81	80	78,5	77	76	73,5	71,5	63,5	
RFFD 40/40/3; 50/B1-A	40	40	3	84	83,5	82,5	82	81,5	81	80	78,5	77	76	73,5	71,5	63,5	

Type	Installed Power HP			Capacity m <sup>3</sup> /h													
				Head m													
				46	50	55	60	65	70	75	80	85	90	95	100		
RFFD 20/21/3;60/B1-Δ	20	21	3	62	61,5	60,5	59,5										
RFFD 20/27/3;60/B1-Δ	20	27	3	62	61,5	60,5	59,5										
RFFD 25/27/3;60/B1-Δ	25	27	3	62	61,5	60,5	59,5	58,5	57,5	56,5	55,5	55	52,5				
RFFD 30/37/3;60/B1-Δ	30	37	3	62	61,5	60,5	59,5	58,5	57,5	56,5	55,5	55	52,5	50	47,5		
RFFD 25/27/3;60/B1-Γ	25	27	3	68	67,5	67	66,5	65,5	64,5	63,5							
RFFD 30/37/3;60/B1-B	30	37	3	74,5	74	73,5	73	72	71	70,5	69	68					
RFFD 30/37/3;60/B1-A	30	37	3	82,5	82	81,5	81	80,5	80								
RFFD 40/40/3;60/B1-A	40	40	3	82,5	82	81,5	81	80,5	80	78,5	77,5	76,5	75	73,5	72		

Type	Installed Power HP			Capacity m <sup>3</sup> /h													
				Head m													
				24	27	30	34	38	42	46	50	55	60	65	75	80	
RFFD 15/21/3;50/B-Γ	15	21	3	55	54,5	54											
RFFD 20/21/3;50/B-Γ	20	21	3	55	54,5	54	53	52	51	50	47,5						
RFFD 20/27/3;50/B-Γ	20	27	3	55	54,5	54	53	52	51	50	47,5	45	42,5				
RFFD 25/27/3;50/B-Γ	25	27	3	55	54,5	54	53	52	51	50	47,5	45	42,5	40	33	30	
RFFD 20/21/3;50/B-B	20	21	3	61,5	60,5	60	59	58	57								
RFFD 25/27/3;50/B-B	25	27	3	61,5	60,5	60	59	58	57	55	52,5	51	47,5	45	40	35	
RFFD 25/27/3;50/B-A	25	27	3	68	67,5	67	66	64	62,5	62	60	57,5	55				
RFFD 30/37/3;50/B-A	30	37	3	68	67,5	67	66	64	62,5	62	60	57,5	55	52,5	45	40	

**TECHNICAL DATA**

- Electric single / multi stage pump, electric motor 2p air cooled, coupling through flexible joint or monoblock
- Diesel single / multi stage pump, diesel engine air/water cooled, coupling through flexible joint
- Jockey pump of horizontal or vertical design
- Expansion tank, with automation devices
- Common suction manifold with valves for each pump
- Common discharge manifold with valve and non return valves for each pump
- Support frame, battery
- Control panel with electronic board for the diesel engine and charging device for battery
- Sets are delivered fully assembled, hydraulically tested, ready to be installed
- Certifications ISO 9001, declaration of conformity CE

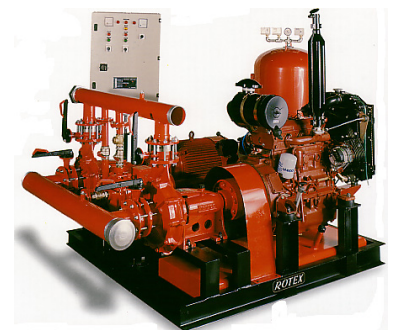


Type	Installed Power HP			Capacity m <sup>3</sup> /h														
				38	42	46	50	55	60	65	70	75	80	85	90	95	100	
	Electric pump	Diesel pump	Jockey pump	Head m														
RFFD 30/37/3;60/Г-Г1	30	37	3	83	82	81,5	81	80	79									
RFFD 40/40/3;60/Г-Г1	40	40	3	83	82	81,5	81	80	79	77,5	76	74,5	72,5	71				
RFFD 30/37/3;60/Г-B1	30	37	3	91	90,5	90	89											
RFFD 40/40/3;60/Г-B1	40	40	3	91	90,5	90	89	88	86,5	85	83	81	78,5	76	60			
RFFD 40/40/3;60/Г-A1	40	40	3	99	99	98	97,5	97	96	94	92,5	91						
RFFD 40/80/3;60/Г-A1	40	80	3	99	99	98	97,5	97	96	94	92,5	91						
RFFD 50/80/3;60/Г-A1	50	80	3	99	99	98	97,5	97	96	94	92,5	91	88	86,5	70			
RFFD 30/37/3;60/Г-Г	30	37	3			84	83	82	81									
RFFD 40/40/3;60/Г-Г	40	40	3			84	83	82	81	80	78	77,5	76	73,5	71	68	66	
RFFD 40/80/3;60/Г-Г	40	80	3			84	83	82	81	80	78	77,5	76	73,5	71	68	66	
RFFD 50/80/3;60/Г-Г	50	80	3			84	83	82	81	80	78	77,5	76	73,5	71	68	66	
RFFD 40/40/3;60/Г-B	40	40	3			89	88	87	86,5	86	84	82,5	81	78				
RFFD 40/80/3;60/Г-B	40	80	3			89	88	87	86,5	86	84	82,5	81	78				
RFFD 50/80/3;60/Г-B	50	80	3			89	88	87	86,5	86	84	82,5	81	78	76	73	70	
RFFD 40/40/3;60/Г-A	40	40	3			99	99	98,5	97,5	96,5	95							
RFFD 40/80/3;60/Г-A	40	80	3			99	99	98,5	97,5	96,5	95							
RFFD 50/80/3;60/Г-A	50	80	3			99	99	98,5	97,5	96,5	95	93	91	88	85	82,5	76,5	

We are able to design and build fire pump sets up of greater sizes (up to 340HP), please contact our sales network

**TECHNICAL DATA**

- Electric single / multi stage pump, electric motor 2p air cooled, coupling through flexible joint or monoblock
- Diesel single / multu stage pump, diesel engine air/water cooled, coupling through flexible joint
- Jockey pump of horizontal or vertical design
- Expansion tank, with automation devices
- Common suction manifold with valves for each pump
- Common discharge manifold with valve and non return valves for each pump
- Support frame, battery
- Control panel with electronic board for the diesel engine and charging device for battery
- Sets are delivered fully assembled, hydraulically tested, ready to be installed
- Certifications ISO 9001, declaration of conformity CE



**RFFE, 2 electric pumps - 1 jockey**

Type	Power HP			Capacity m <sup>3</sup> /h							
	Electric		Jockey	6	8,4	10,8	15	18	21	24	27
	1	2									
RFFE 5.5/5,5/2; 180C	5,5	5.5	2	62	59	56	49	43	35		
RFFE 7.5/7,5/2; 180B	7,5	7.5	2	73	71	69	64	59	54	46	
RFFE 10/10/3; 180A	10	10	3	85	83	81	76	72	67	60	
RFFE 12.5/12,5/3; 200B	12,5	12.5	3	94	92	90	85	80	74	68	61
RFFE 15/15/3; 200A	15	15	3	102	101	98	93	88	83	76	69

Type	Power HP			Capacity m <sup>3</sup> /h								
	Electric		Jockey	6	12	15	18	21	24	30	36	42
	1	2										
RFFE 4/4/2;32/160A	4	4	2	37	34	32	30	27,5	24	20		
RFFE 5.5/5,5/2; 32/200C	5.5	5.5	2	44	41,5	40	38	36	34	31,5		
RFFE 7.5/7,5/2; 32/200B	7.5	7.5	2	52	49	47	45	43	41	38,5	36	
RFFE 10/10/3; 32/200A	10	10	3	57	56	55	53	52	50	47	44	
RFFE 15/15/3; 32/250B	15	15	3	87	84	82	78,5	74,5	69	60		
RFFE 20/20/3; 32/250A	20	20	3	97	94,5	92	89	85	80	70		
RFFE 5.5/5,5/2; 40/160A	5.5	5.5	2	38	37	36,5	36		33,5	30	26	20
RFFE 7.5/7,5/2; 40/200B	7.5	7.5	2	47	46	45,5	44,5		42	38	34	28
RFFE 10/10/3; 40/200A	10	10	3	55	55	54,5	54		52,5	49,5	46	41

Type	Power HP			Capacity m <sup>3</sup> /h									
	Electric		Jockey	6	12	18	30	42	48	54	60	84	102
	1	2											
RFFE 10/10/3;250B	10	10	3	60	58	56	49	39,5	33,5	26,5			
RFFE 15/15/3; 250A	15	15	3	77,5	75,5	73	66	56	50	42			
RFFE 15/15/3;40-250B	15	15	3	71	70	69	64	55					
RFFE 20/20/3;40-250A	20	20	3	88	87	86	81	72					
RFFE 20/20/3;50-200B	20	20	3				52	52	52	51	50	44	38
RFFE 25/25/3;50-200A	25	25	3				61	60,5	60,5	60	60	54	48
RFFE 30/30/3;50-200AR	30	30	3				69	68,5	68,5	68	68	62	56
RFFE 20/20/3;50-250B	20	20	3			72	70	67	65	62	59		
RFFE 25/25/3;50-250A	25	25	3			85	83	80	78	75	73		
RFFE 30/30/3;50-250AR	30	30	3			95	93	90	88	85	83		

**We are able to design and build fire pump sets up of greater sizes (up to 340HP), please contact our sales network**

**TECHNICAL DATA**

- Electric single / multi stage pump, electric motor 2p air cooled, coupling through flexible joint or monoblock
- Diesel single / multi stage pump, diesel engine air/water cooled, coupling through flexible joint
- Jockey pump of horizontal or vertical design
- Expansion tank, with automation devices
- Common suction manifold with valves for each pump
- Common discharge manifold with valve and non return valves for each pump
- Support frame, battery
- Control panel with electronic board for the diesel engine and charging device for battery
- Sets are delivered fully assembled, hydraulically tested, ready to be installed
- Certifications ISO 9001, declaration of conformity CE

